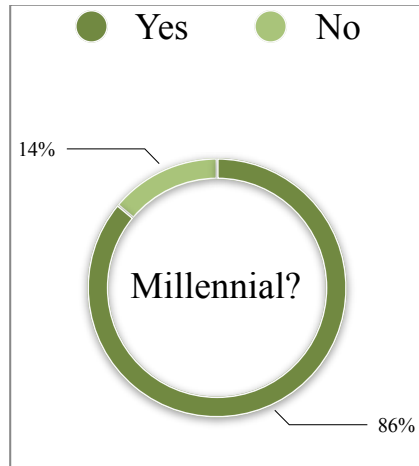


Overview

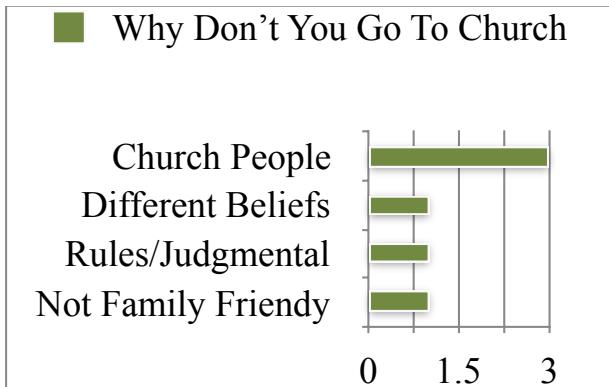
Question #1

Are You a Millennial?	
Yes	37
No	6



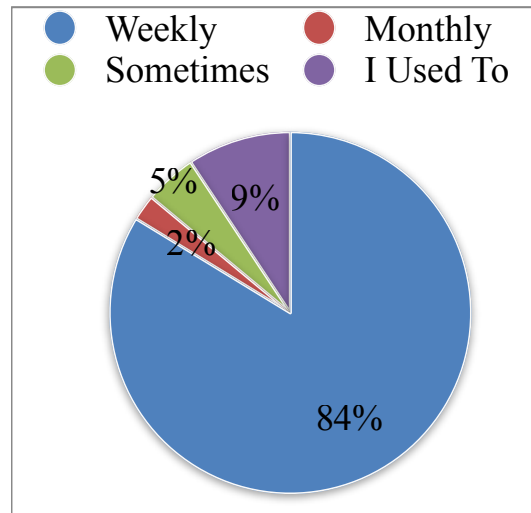
Question #4-2

Why Don't You Go To Church	
Church People	3
Different Beliefs	1
Rule/judgmental Behavior	1
Not Family Friendly	1



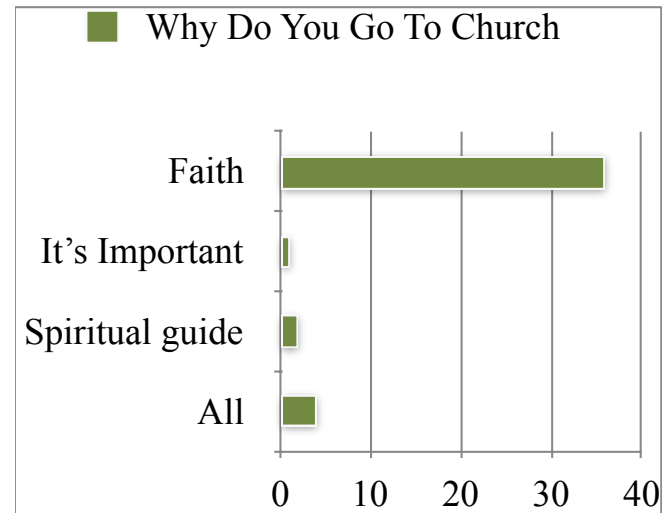
Question #4

Do You Go To Church	
Weekly	36
Monthly	1
Sometimes	2
I Used To	4



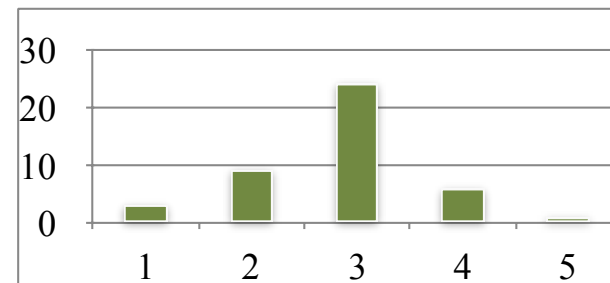
Question #4-1

Why Do You Go To Church	
Faith Community	36
It Seems Important	1
For Spiritual Guidance	2
All of the Above	4



Question #4-2-2

How well is the church living out it's mission?	
1 - Poorly	3
2 - Not Well	9
3 - Well	24
4 - Fairly Well	6
5 - Very Well	1



Constructive Critique?

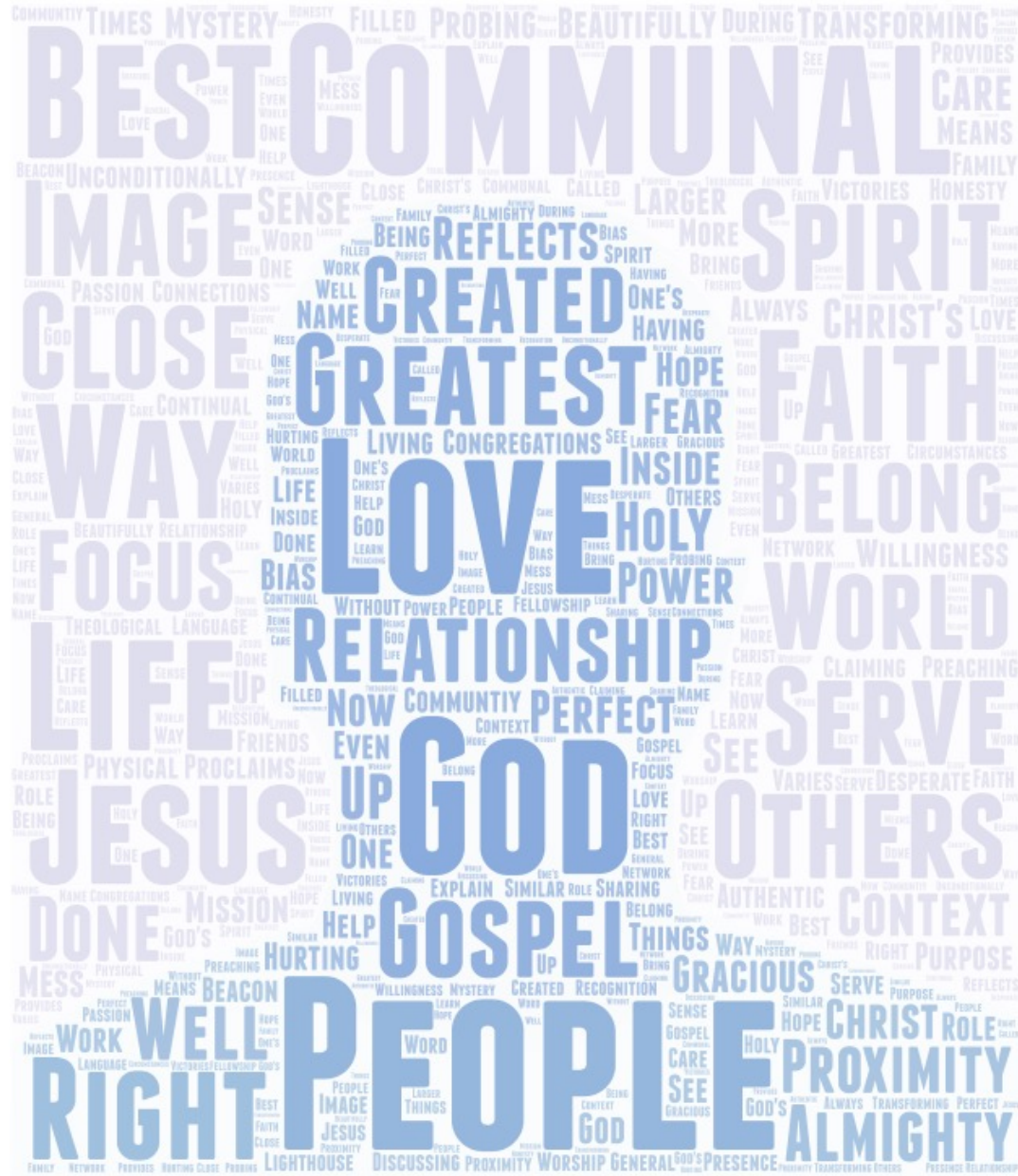
Practice what you preach, no one is perfect, take help when/ where you can get it.

Do more for the community. Lead by example.

Stop preaching the prosperity gospel. Start ministering to the poor, the needy, the suffering, the persecuted, the TRUE Church.

Respect diversity; respect lifestyle choice and lifestyle difference. According to the Bible, everyone is a sinner so stop being such righteous prick-holes about LGBT+ people's lives.

Churches Greatest Assets



Churches Biggest Liabilities

- Being inward focused
- A refusal to confess personal, corporate, and systematic sins, even if those are believed to be "necessary".
- Not loving
- Lost some of its sensitivity to the individual.
- Lack of commitment to what Jesus wants from them.
- Assuming it has all the answers.
- Liberalism
- Hypocrisy, bad theology
- Support of the "country club" culture within congregations - the club-like-status.
- Insider focused
- Fear of change
- When it acts as a center for judgmentalism
- The people. Being outward focused
- Fear of change or progress
- It's people - fallen and sinful, in need of grace
- Grumbling over unimportant things/ hurting one another
- Negativity
- Gatekeeper mentality (trying to control who's in and who's out), greater allegiance to the inside club than to bringing new people to faith, allegiance to Caesar over following the teachings and examples of Jesus.
- The Bible is not God, it points to God. The Bible is a subordinate revelation to Jesus Christ himself. It is this fallacy that lets us use the Bible as a weapon.
- Being judgmental of others
- Poor scholarship in Bible colleges and seminaries.
- the people, can often be self-serving and centered
- A lot of times we serve our own idea of God instead of God
- Christians often forget their first love-Jesus, and forget that individuals still need forgiveness. We're not perfect yet.
- Inflexibility, cliques, agism.
- Judgmental ness and thinking "their" ministry is most important
- It can also be its people
- Fear of change and constantly doing things the same way just because that is the way it's always been done.
- Drawing in unbelievers or sharing the Good News.
- To much time pleasing the culture and people and not convicting us and showing us the Gospel.
- focusing on physical presence, rather than community presence
- Judgmentalism.
- Faulty presentation of who God is... watered down scriptural theology
- The Church is terrible at being light on its feet enough to think about new ways to do things without automatically assuming that that does away with the old ideas
- Evangelism and outreach
- Messiah complex, obsession to convert others to specific (usually heretical) ideology rather than devotion to Jesus.

